

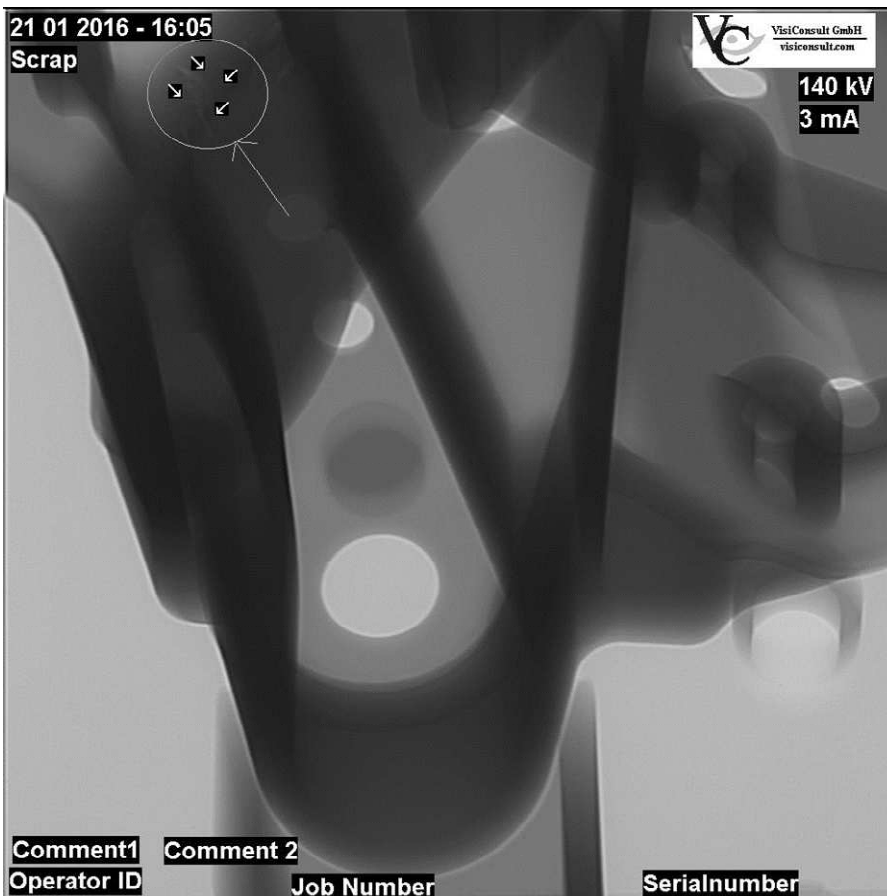
Xplus Overlays

INSPECTION AND PROCESS INFORMATION OVERLAY

Many standards require to have inspection process information, like serial number, batch, date, X-ray settings etc., embedded directly in the image. In times of traditional radiography this was done through lead numbers on the film. This approach is not only incredibly time-costly but also very inflexible. With Digital Radiography (DR) this information can be conveniently placed as an overlay – even in live mode.

Process Information like kV, mA, operator name, inspection decision and many more can be automatically provided through the *Xplus*. Other information like serial number, inspection marks and comments can be placed dynamically or demanded by the inspection sequence, which can be easily setup through the sequence-editor by the supervisor without any programming knowledge.

- Demand input of operators through customizable inspection sequences
- Brand the images with your company logo
- Automated placement of process and inspection information even in live mode
- Replaces lead numbers and signs know from traditional radiography



The VisiConsult overlay toolbox is a standard module that offers a broad variety of choices. This leads to a huge increase in efficiency compared to placing lead numbers on every shot.

Process Information:

- kV / mA
- Date and Time
- Operator name
- Batch number
- Job number
- Serial number
- Decision

Inspection marks:

- Circles, Squares etc.
- Free drawing tool
- Arrows

Others:

- Company Logo
- Comments