

Xplus ASTM References

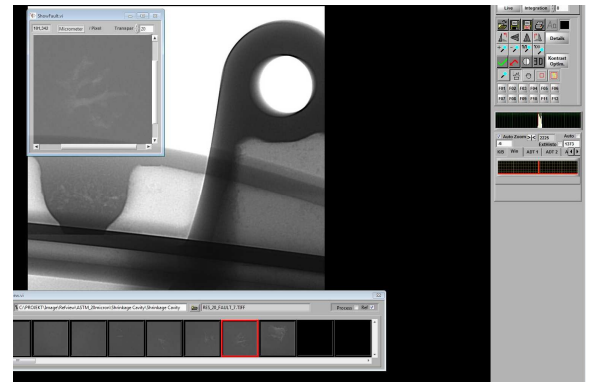
EMBEDDED ASTM ERROR CATALOGUE MODULE



VisiConsult
X-ray Systems & Solutions

To classify errors according to the ASTM standard a digital reference catalogue is very helpful to make a correct decision. The Xplus ASTM module embeds the official reference images seamlessly into the image enhancement environment. The errors will be scaled automatically to the current geometric magnification of the X-ray system to compare in the real dimensions. Therefore, the system has to be calibrated once before inspection process through the simple VisiConsult One-Click calibration.

- Official ASTM reference catalogue embedded
- Overlay image with the reference errors
- Easy error classification through direct comparison
- Convenient browsing in additional window
- Complying to international inspection standards



If there are still doubts the reference defect can be directly projected into the current X-ray image for best comparison. The operator can choose the defect type and size from an image browser. All official defect types like shrinkages, porosities, cracks and many more are covered through this module.

